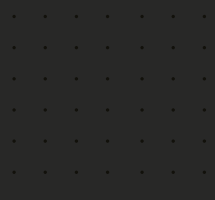
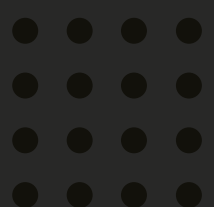
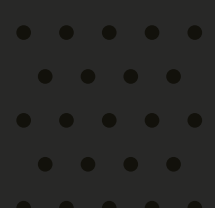
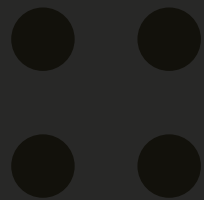
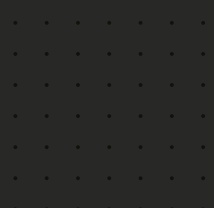


# Projects Volume 2

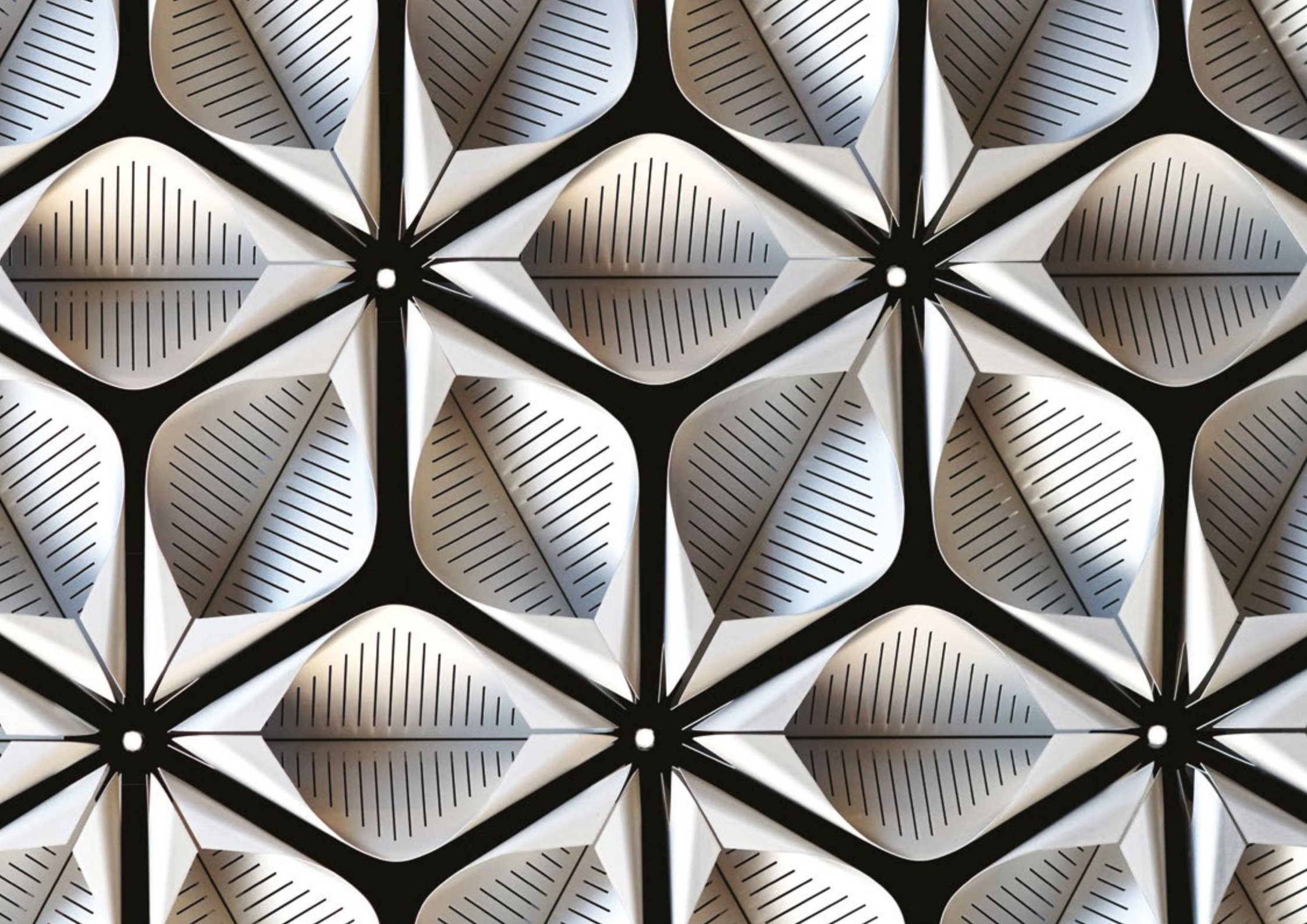


“Each material is only  
what we make it.”

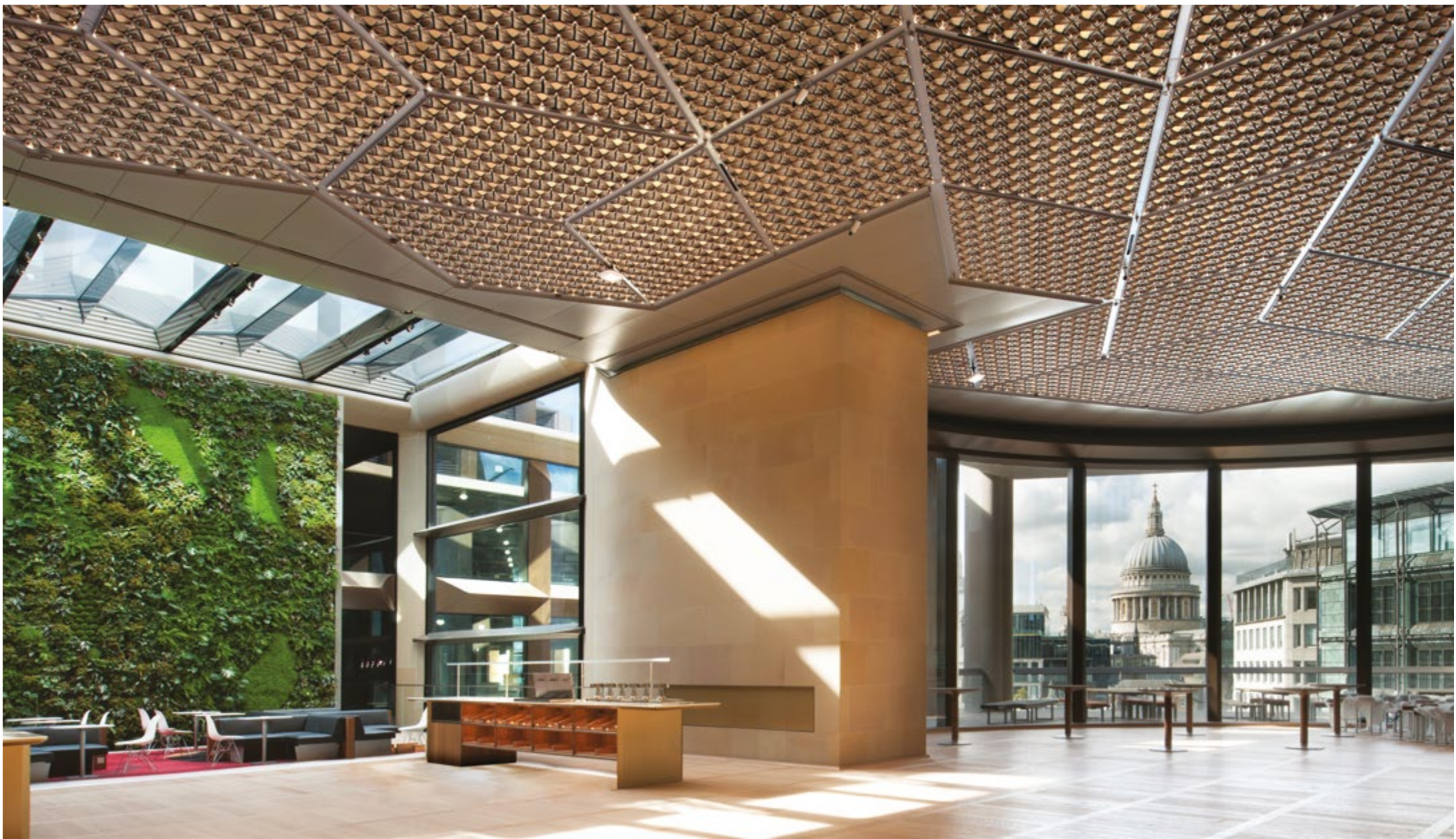
Ludwig Mies van de Rohe



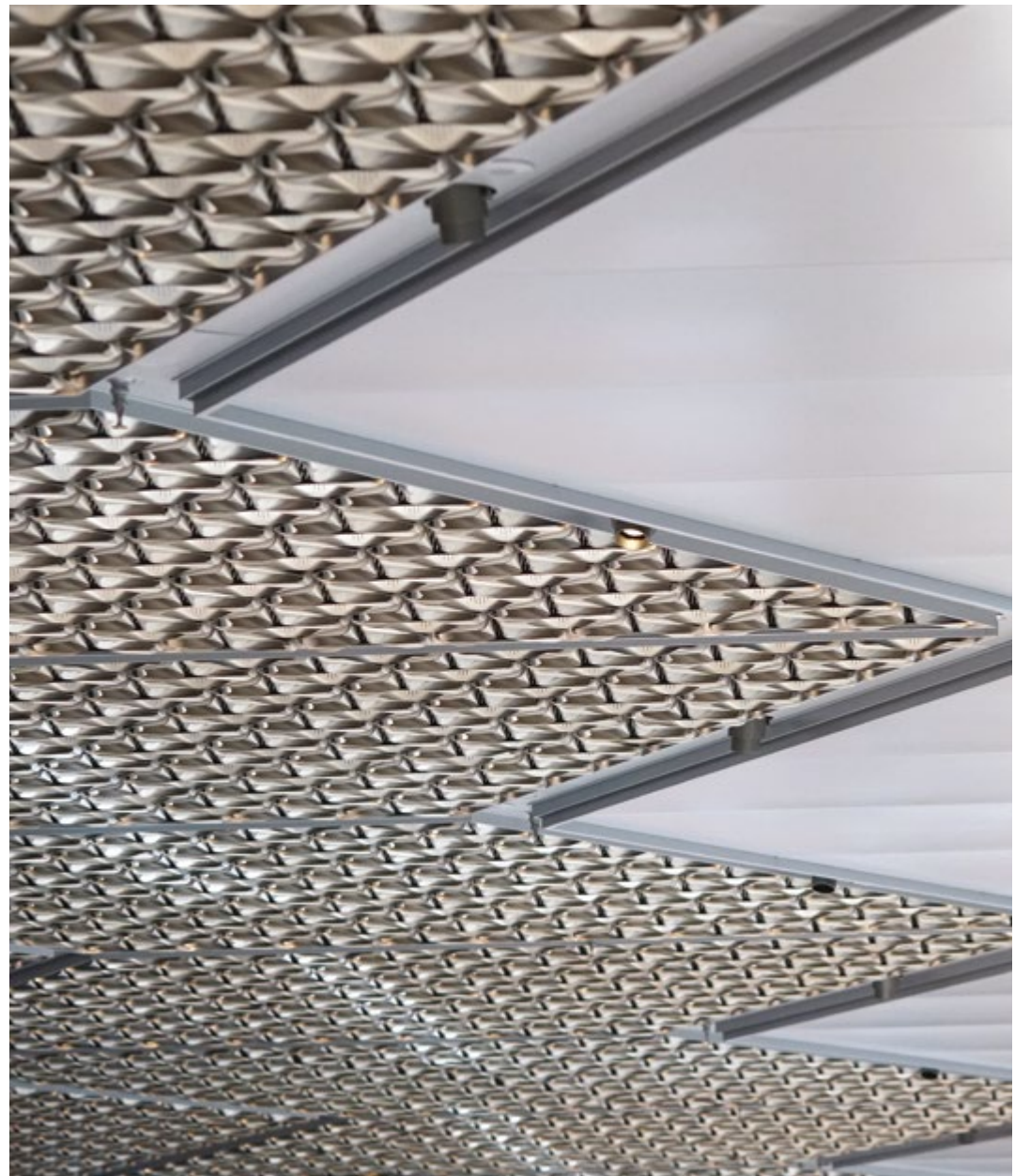
[sasintgroup.com](http://sasintgroup.com)











## Bloomberg HQ

---

Location  
**London**  
Architect  
**Foster + Partners**

Contractor  
**Sir Robert McAlpine**  
Sector  
**Commercial Office**







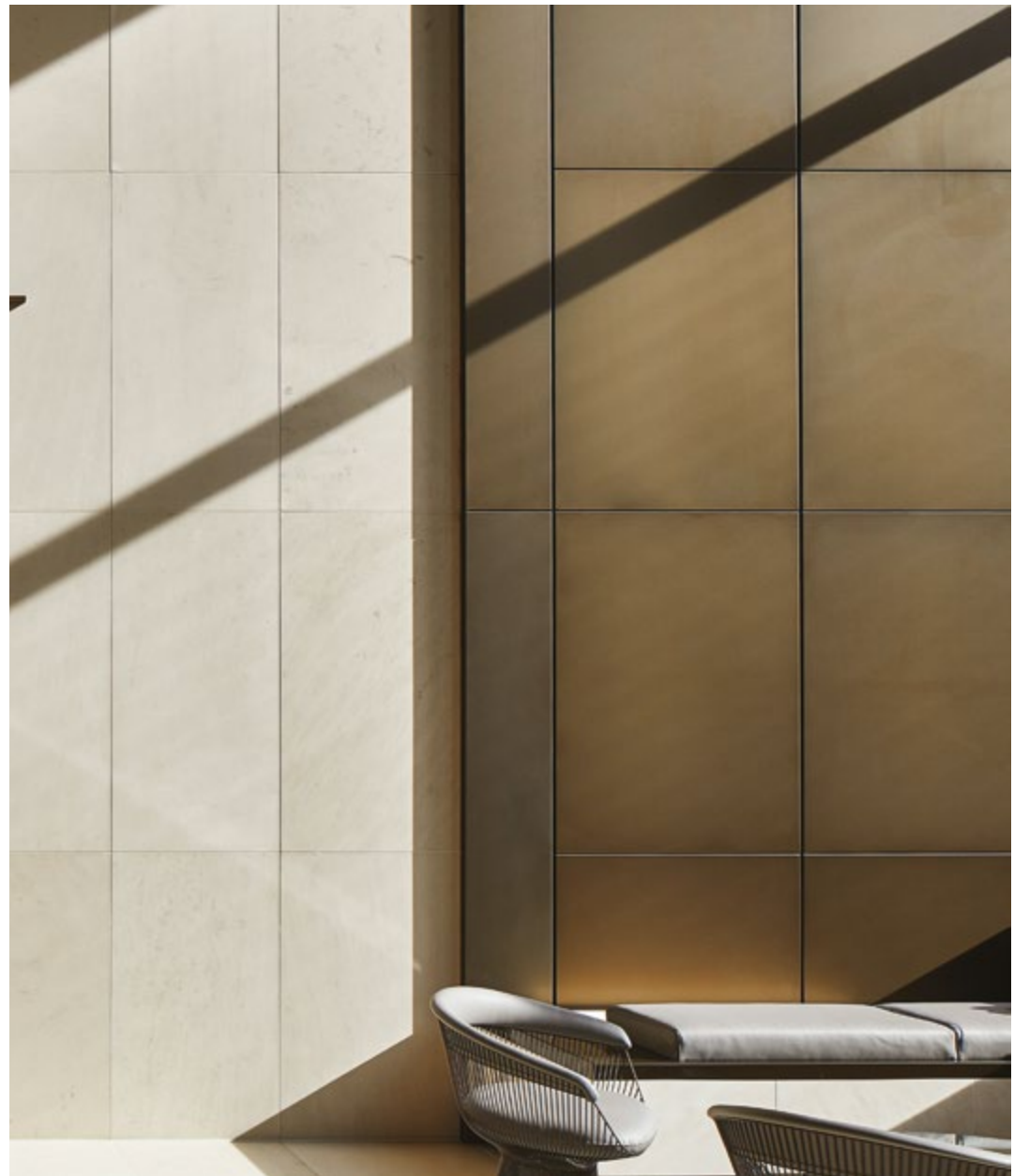
## Zig Zag Building

Location  
**London**  
Architect  
**HLW International**

Contractor  
**BW Interiors Ltd**  
Sector  
**Commercial Office**



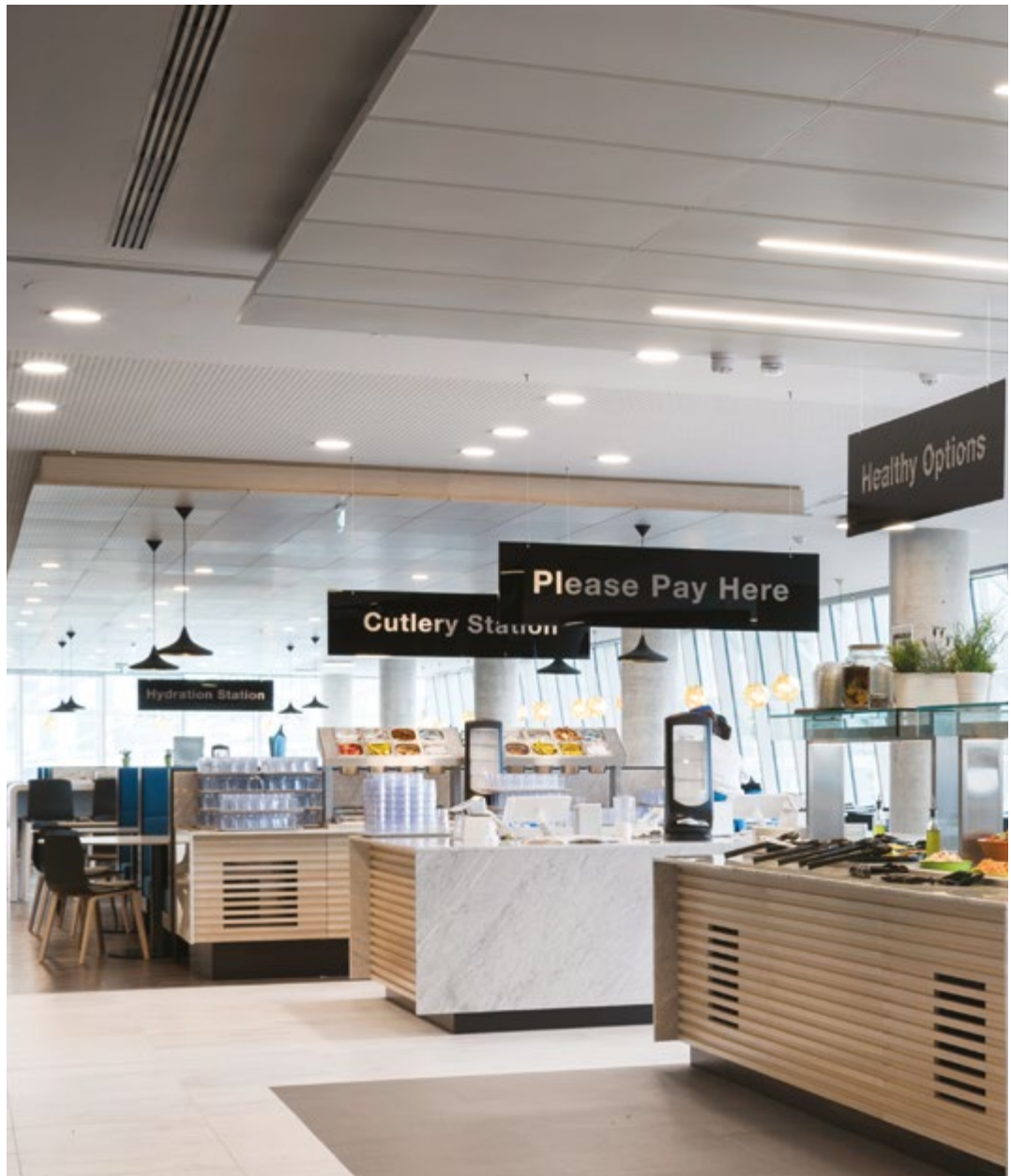




LSQ

Location  
**London**  
Architect  
**Make Architects**

Contractor  
**Brookfield Multiplex**  
Sector  
**Commercial Office**







## Central Bank of Ireland

---

Location  
**Dublin**  
Architect  
**Henry J Lyons**

Contractor  
**Walls Construction**  
Sector  
**Commercial Office**







## ADNOC HQ

---

Location  
**Abu Dhabi**  
Architect  
**HOK**

Contractor  
**Six Construct**  
Sector  
**Commercial Office**





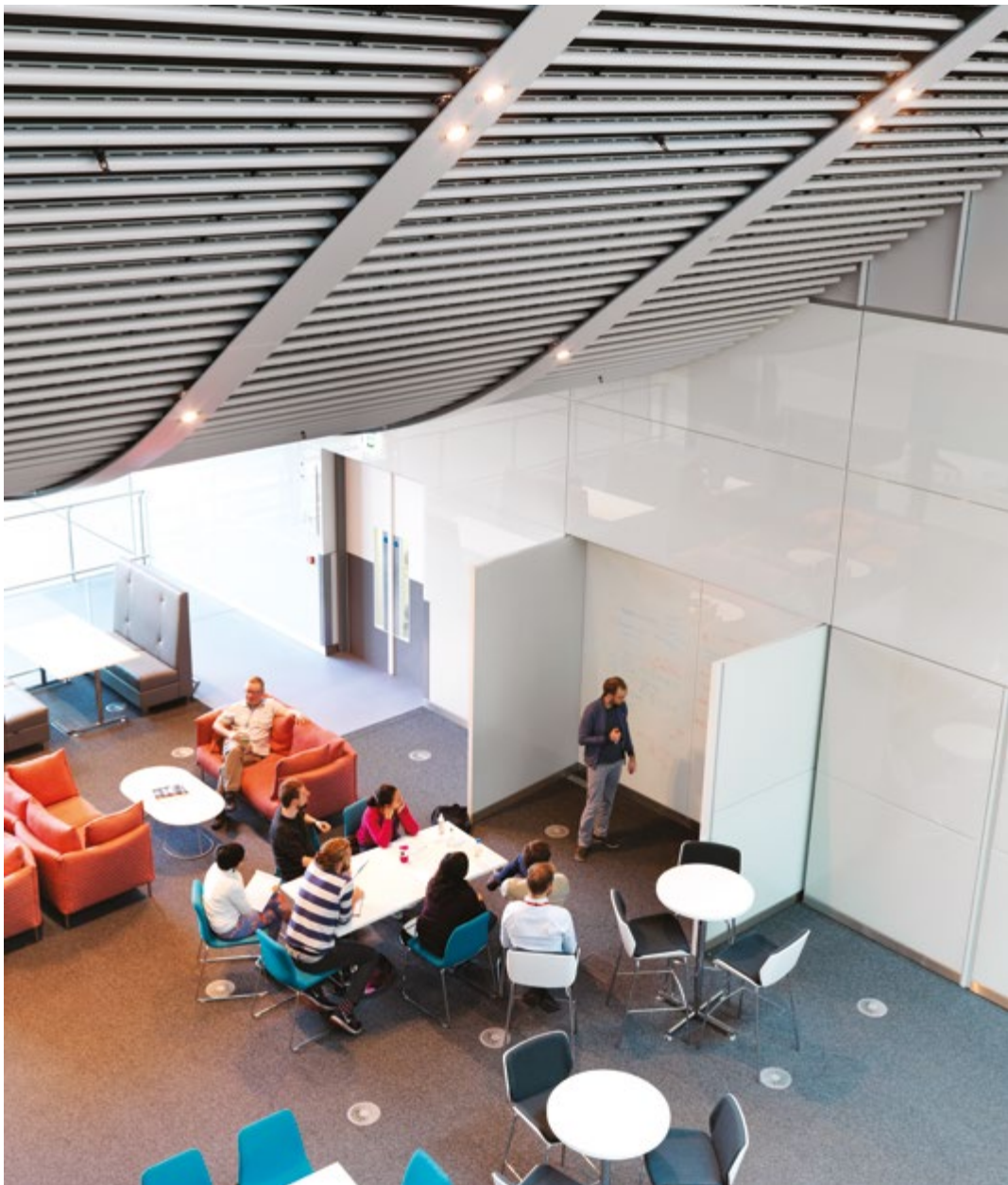


## Lendlease

---

Location  
**Sydney**  
Architect  
**Hassell Studio Sydney**

Contractor  
**Lendlease**  
Sector  
**Commercial Office**







## Francis Crick Institute

---

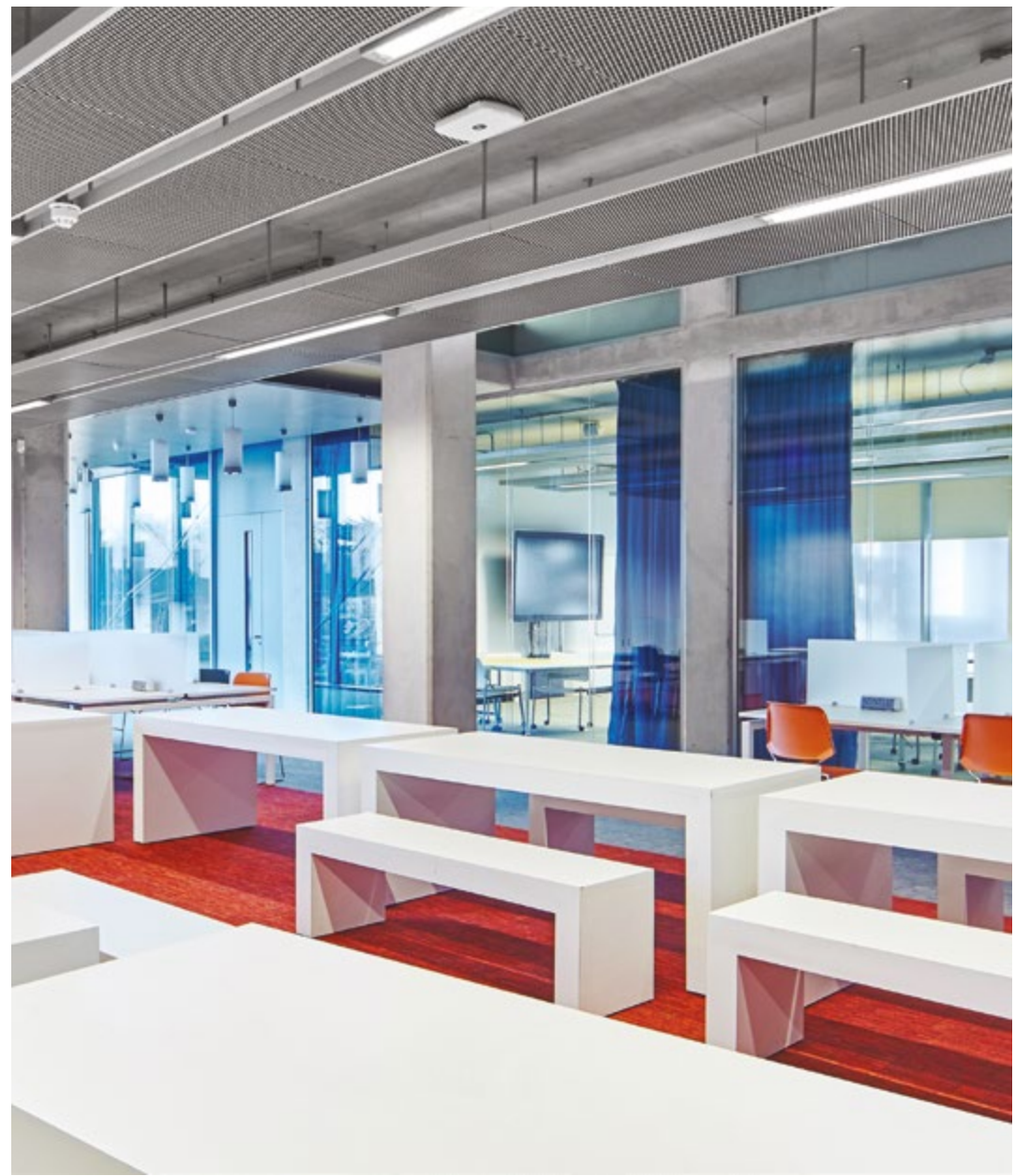
Location  
**London**

Architect  
**HOK International & PLP  
Architecture**

Contractor  
**Laing O'Rourke  
Construction South Ltd**

Sector  
**Healthcare**









## St. Patrick's College

---

Location

**Dublin**

Architect

**RMJM + Taylor Architects**

Contractor

**JJ Rhatigan**

Sector

**Education**









## University of Technology

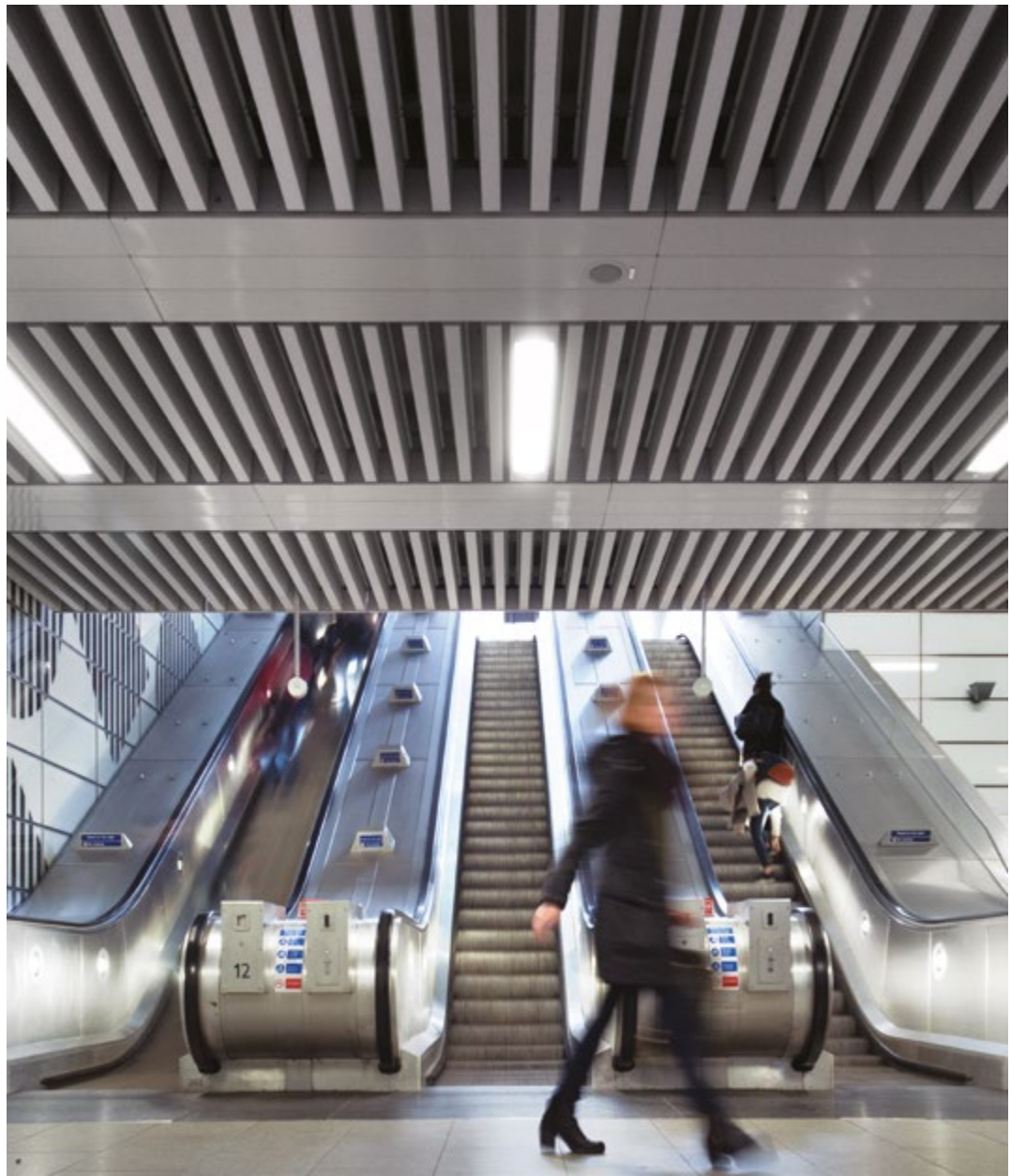
---

Location  
**Sydney**

Architect  
**BVN**

Contractor  
**Richard Crookes**

Sector  
**Education**





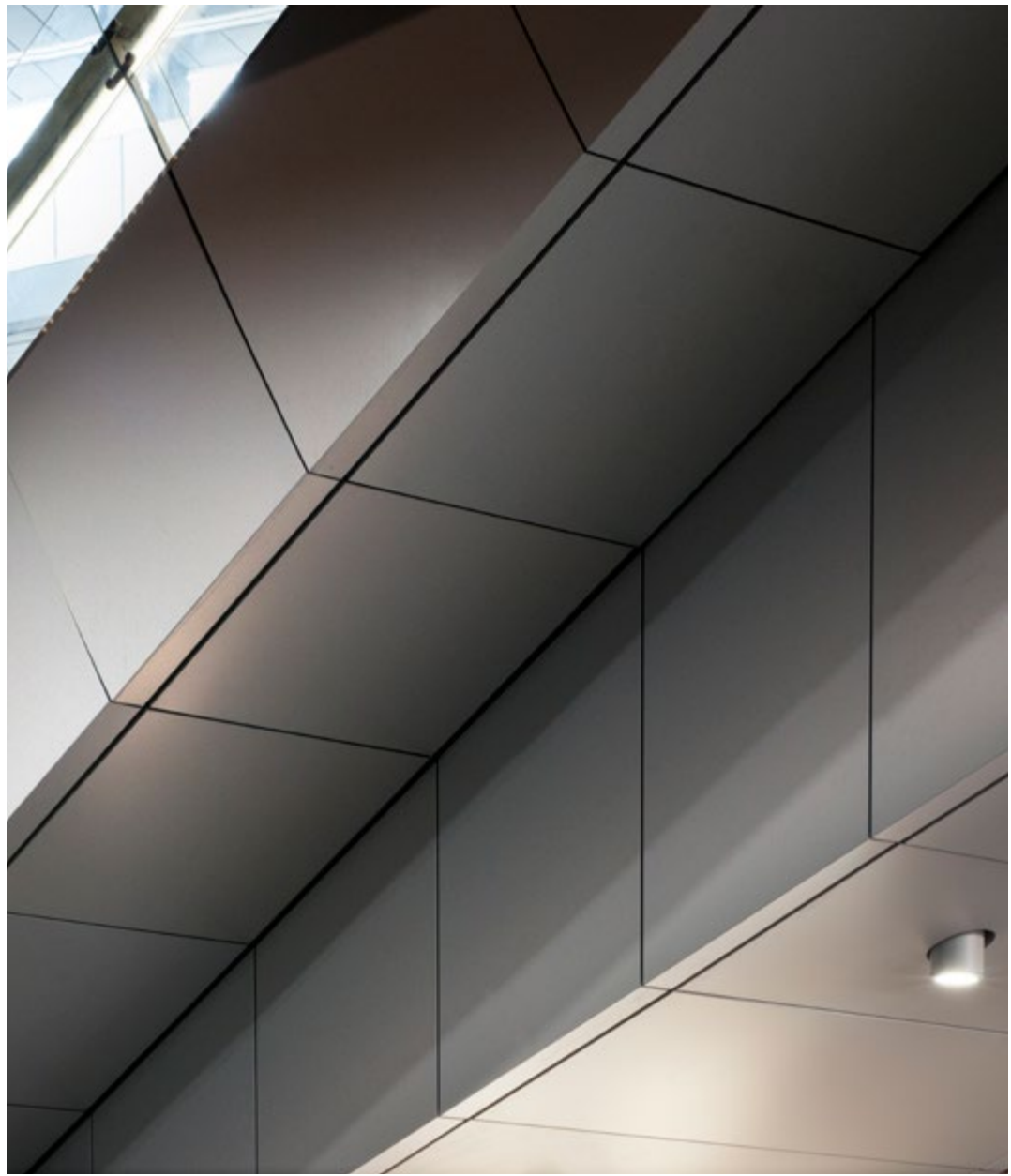
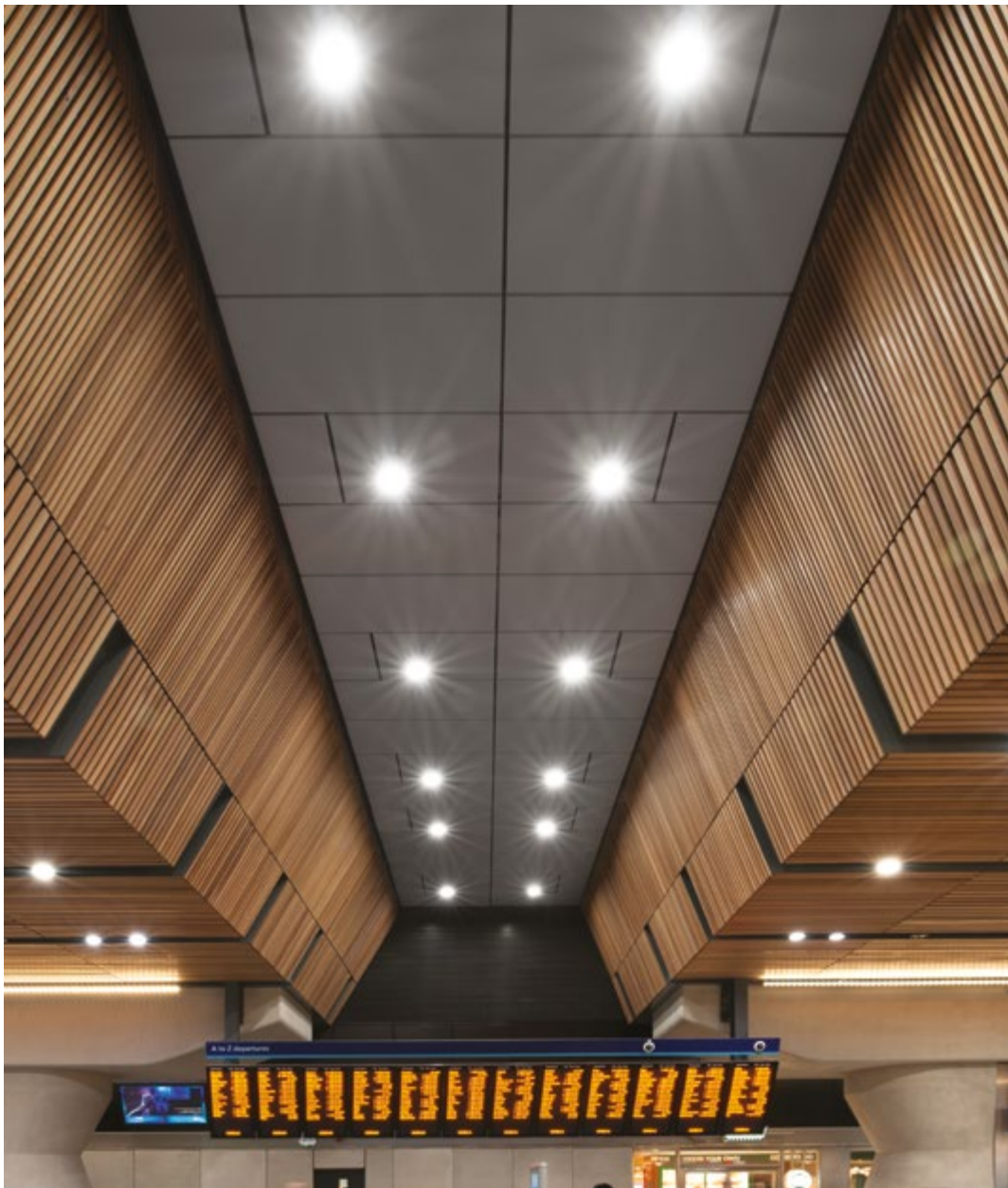


## Tottenham Court Road Station

---

Location  
**London**  
Architect  
**Halcrow**

Contractor  
**TWBN**  
Sector  
**Transport**







## London Bridge Station

---

Location  
**London**  
Architect  
**Grimshaw**

Contractor  
**Costain**  
Sector  
**Transport**





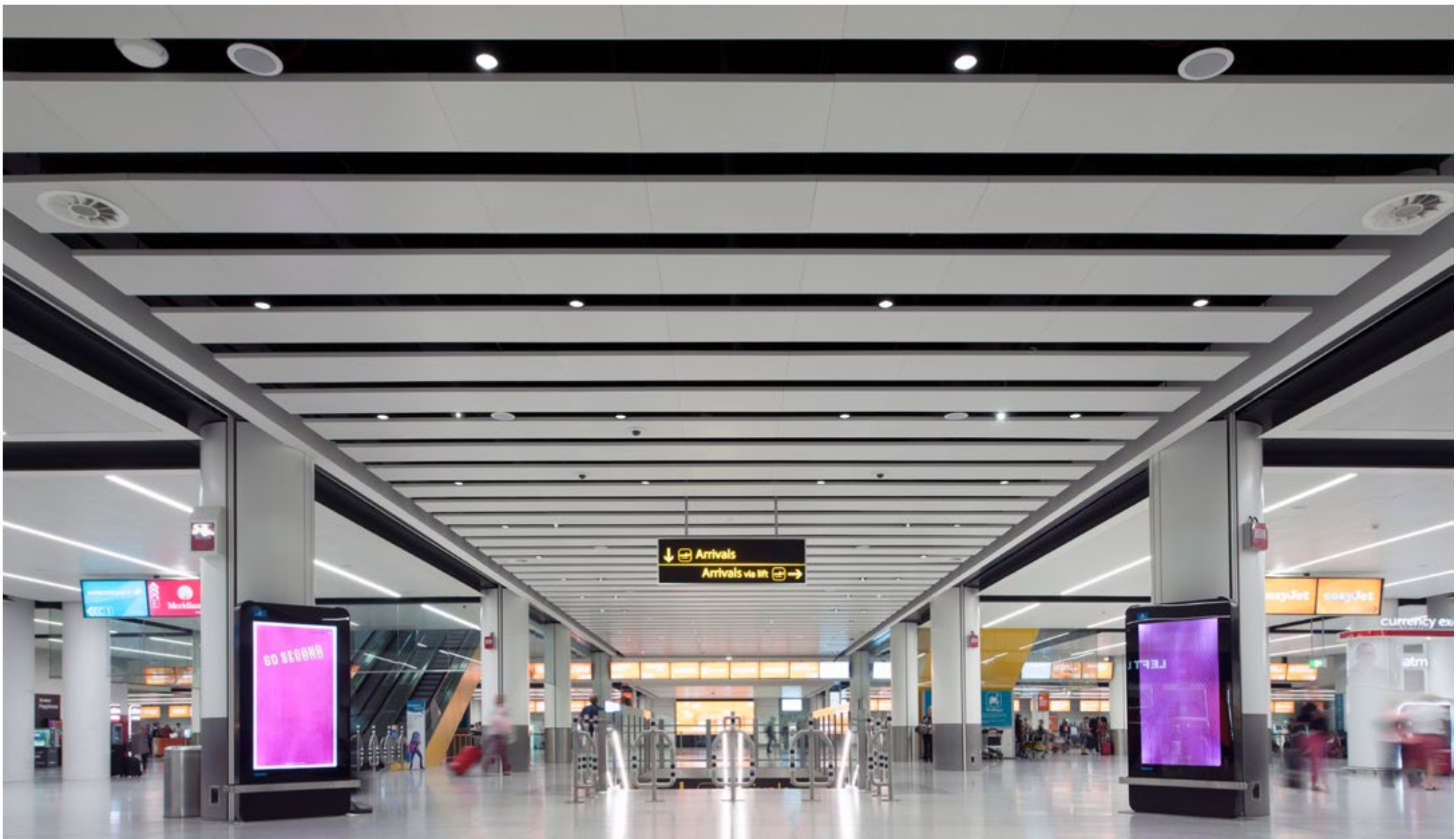




## Victoria Station

Location  
**London**  
Architect  
**Mott MacDonald**

Contractor  
**Taylor Woodrow & BAM  
Nuttall JV**  
Sector  
**Transport**



↓ Arrivals  
Arrivals via lift →

GO SECOND

LEFT

easyJet easyJet  
currency ex  
atm

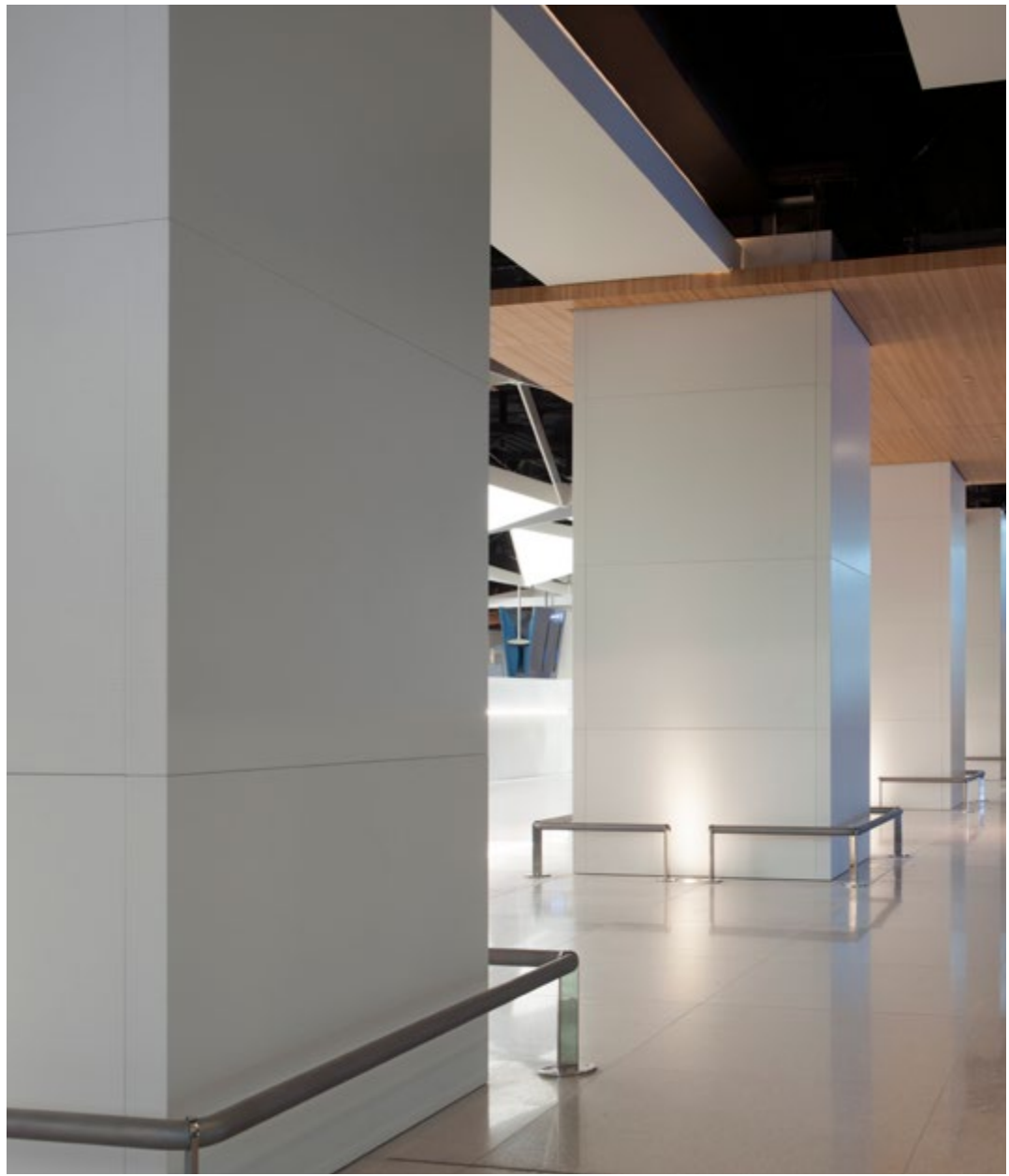




North Terminal, Gatwick International Airport

Location  
**London**  
Architect  
**Atkins**

Contractor  
**Balfour Beatty**  
Sector  
**Transport**







## Muscat International Airport

---

Location  
**Muscat**  
Architect  
**Hill International**

Contractor  
**BEJV**  
Sector  
**Transport**







## Leopardstown Racecourse

---

Location  
**Dublin**  
Architect  
**Weichert Architects**

Contractor  
**Duggan Brothers**  
Sector  
**Leisure**









## Robinsons

Location  
**Dubai**  
Architect  
**HMK Architects**

Contractor  
**Deco Emirates**  
Sector  
**Retail**

